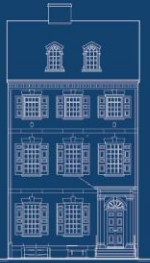




2017 ANNUAL REPORT



Powel 1765



Grumblethorpe 1744

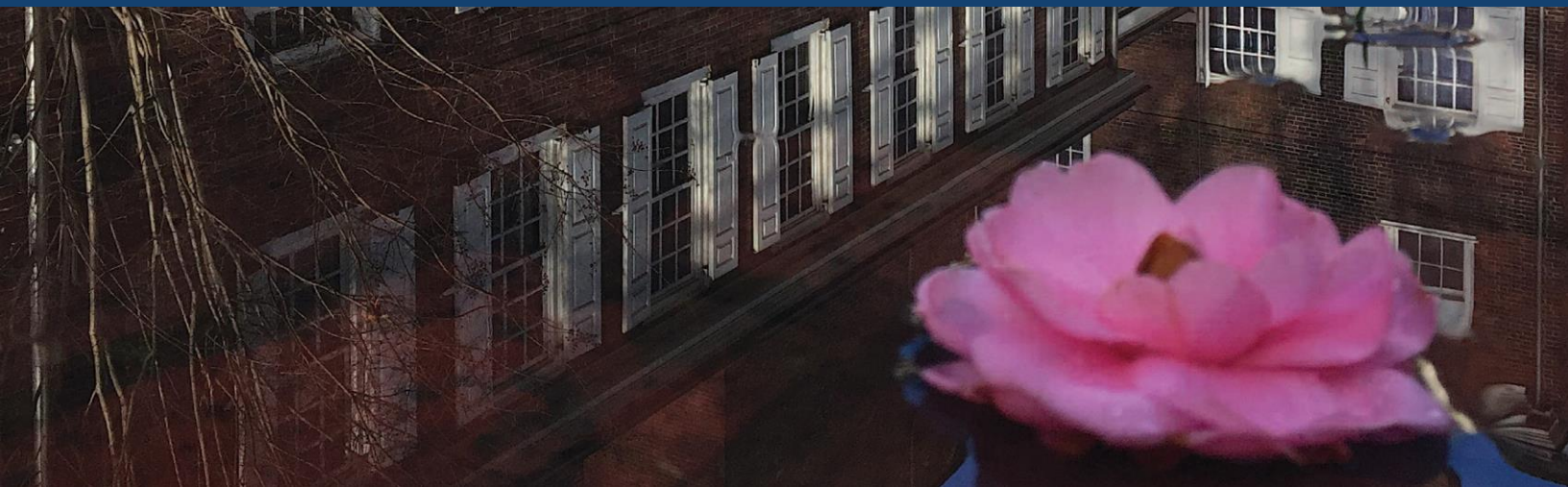


Hill-Physick 1786



Historic Waynesborough 1724

Philadelphia Society for the Preservation of Landmarks



Our Mission:

For 86 years, the Philadelphia Society for the Preservation of Landmarks (PhilaLandmarks) has played a significant role in both the historic preservation movement and heritage tourism in Philadelphia by restoring, furnishing, and presenting to the public its distinguished house museums—Powel House, Grumblethorpe, Hill-Physick House, and Historic Waynesborough. ***The mission of Landmarks is to inspire people to engage with history by preserving these four unique sites and by providing related historical, educational, and cultural programming.*** Each property presents a distinctive perspective and plays a significant role in their respective communities.

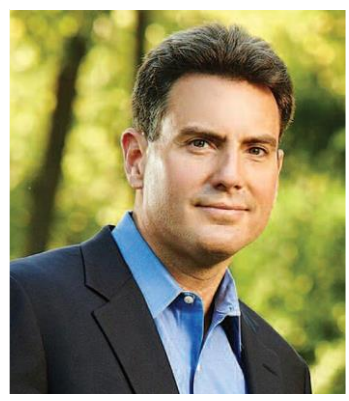
PhilaLandmarks believes that it is only through understanding and engaging in our histories (architectural, social, political, etc.) that we can make decisions about what is important to us today and what we choose to support in the future. While we enjoy providing quality house tours, we will also continue to discover new audiences and innovative ways to engage with the stories we tell.



Our Core Values:

- We believe that historic preservation illustrates the value of what endures in our society, and that this inspires people to learn about history and engage with their community.
- We are committed to maintaining our properties and their collections for the long-term, so that they will remain public resources in the future.
- We want our properties to be open and well-used by many different audiences in many different ways.
- We respect the uniqueness of each of our properties, and believe that their different programs, priorities, and places in their communities create great value for PhilaLandmarks and its visitors.
- We are thoughtful and foresighted stewards of the organization's resources and always encourage others to join us.

Message from the Chair



This past year we took on a large capital improvements project, replacing the roof of the Hill-Physick House. It's been quite awhile since PhilaLandmarks has had the financial capacity to take on such a project. And it shows just how far we've come in recent years, yet it is also a great illustration of how our organization works at its best.

The need for restoring the roof had been coming on for years, with little leaks here and there, and occasional patching. But the Hill-Physick house committee knew more was needed, so they created the *Hill-Physick Wine and Beer Party* to begin fundraising efforts to replace the roof. This coincided with our concerted efforts to reach out into the Society Hill neighborhood (home to Hill-Physick and Powel houses), with new branding, programming, and membership initiatives. This momentum was key in driving us forward. Increased neighborhood awareness allowed this fundraising event to flourish. For each of four years the committee banked an average of \$5 to \$6K towards the bigger goal.

We had a message, we had a need, and we had base level support, which together allowed us to reach out to the right foundation to get this major project funded. The initial funds raised by the Hill-Physick committee paid for an assessment and architectural drawings by Milner Architects, which were required to secure the grant. Everything came together—team players and the right partnerships—and getting this project done as it should be. Today, the Hill-Physick roof is ready for another hundred years.

A handwritten signature in black ink that reads "Charles P. Keates".

Charles P. Keates, Esq.
Chairman



Message from the Executive Director



In May of 2013, I stepped up as interim executive director during a time of great transition for PhilaLandmarks. Six months later, when I was named to the position permanently, I had a good sense of the direction I wanted the organization to head. I recently came across the email I sent to membership announcing my acceptance of the position. In it I stressed our core values of respecting the uniqueness of each of our houses and the fact that we want our properties to be open and well-used by many different audiences. I talked about setting goals in building strategic partnerships with other historic organizations, engaging new audiences through diverse (and new) storytelling, enhancing the overall financial health of the PhilaLandmarks, and prioritizing investments in maintaining our historic properties.

Yet, even then, I don't think I could have imagined where we sit today as an organization. We have dug deep, experimented, and forged ahead on all fronts. And now we are beginning

to witness the fruits of our labors. What makes me most proud is seeing our properties alive and vibrant, full of unique programming with varied audiences. We made it happen.

And by "we" I include the many individuals—staff, board, committee members, partners, volunteers, new and continuing members, AND donors—who have driven this vision forward. There are far too many to mention any by name (but make sure you read the lists included in this report!). I am ever so grateful for the guidance and encouragement I have received. And I am in continual awe of the diligent work put in by staff and volunteers alike.

We are just getting started. Loving our historic sites means there is always more work to do. So, let's all continue to have fun doing it!

A handwritten signature in blue ink, appearing to read "Jonathan Burton".

Jonathan Burton
Executive Director



Powel neighbors Parker and Cooper Band held a lemonade stand to raise funds for PhilaLandmarks.

Top Achievements

Increased Financial Stability

We are now seeing the effects of several carefully orchestrated strategic investments

- Improved rental facilities at Historic Waynesborough.
- Strategic fundraising campaigns (such as the 3-year Powel250 endowment campaign spearheaded by the Powel Committee.)
- Building cash reserves and fully paying off our line-of-credit.

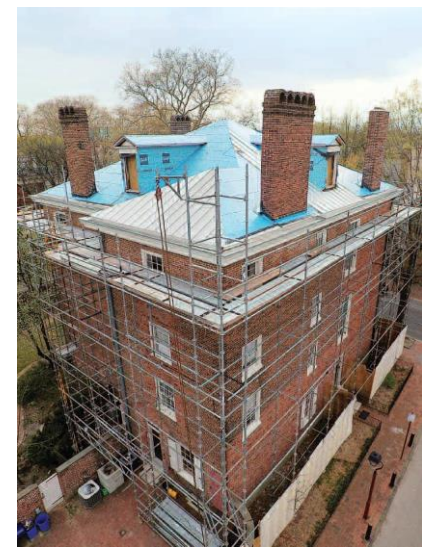
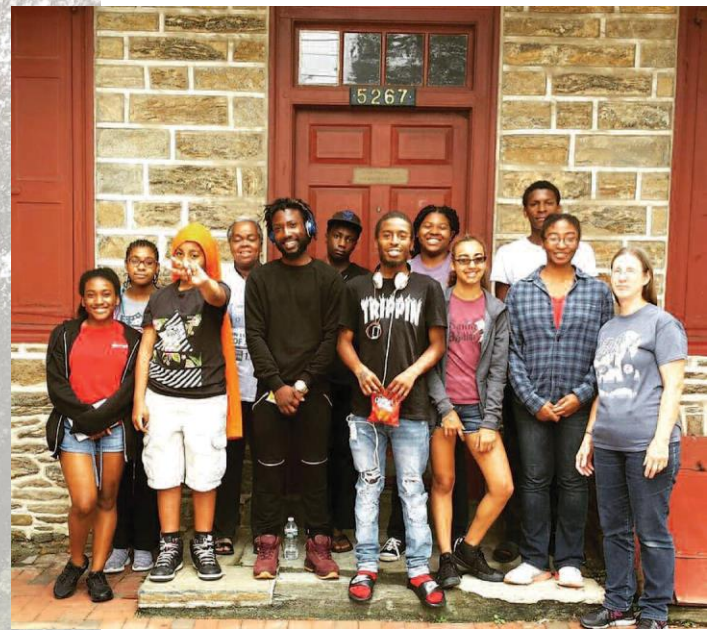
Last year's strong financial performance allowed us to invest further in programs and staff and they are showing positive results.

Capital Improvements Plan (and Progress)

- Our financial standing combined with the ongoing fundraising efforts of the Hill-Physick committee, allowed us to successfully secure a \$215,000 project grant for a full restoration of the roof at Hill-Physick.
- Receipt of a capital improvement grant through Historic Germantown allowed some much-needed work on the Grumblethorpe tenant house, which is also home to the GEEP classroom.
- We are working to prioritize upcoming needed projects to identify future funding.

Internal Capacity Growth

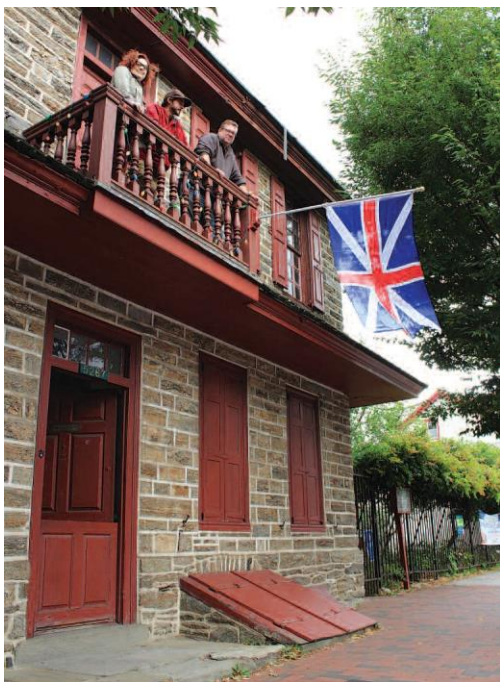
- A year-long Grumblethorpe strategic plan process allowed us to identify the need for a full-time Grumblethorpe Operations Manager (starting FY 2018) to handle increased programming and site needs.
- The Philadelphia Foundation- Fund for Children enabled us to hire two former GYV members to manage (and grow) our Grumblethorpe Youth Volunteer program.
- We created a new position, the Membership and Program Coordinator, to manage our database, grow membership, and help manage onsite programming. This resulted in an immediate 30% increase in membership and more than \$2000 in increased revenue.
- Mission-driven programming: building external partnerships based on the histories we share in our houses (and those we want to tell.) Examples are partnering with the Philadelphia History Museum on our "Saved!" exhibit, working with artists through the Clay Studio to create art based on the Neoclassical design at Hill-Physick, and developing the PhilaLandmarks Early Music Series with period-instrument chamber musicians and groups.





OCTOBER 2016

- British Occupation of Grumblethorpe aka Grumblefest 2017
- PhilaLandmarks placed on loan select items with Temple Urban Archives
- Hill-Physick Roof Grant Received
- Botanical art class resumes at Powel House
- 4th Annual Wine and Beer Party at Hill-Physick
- Hill-Physick featured on *Ghost Hunters* syndicated television show



NOVEMBER 2016

- Philadelphia Society for Promoting Agriculture luncheon
- Grumblethorpe Tenant House roof repairs
- Temple Cultural Fieldwork Initiatives begin work to revamp (downtown) education program
- Annual Grumblethorpe Youth Volunteers Pie Fundraiser



DECEMBER 2016

- Pop Up Holiday Shop at Hill-Physick
- Annual Powel House holiday party
- "Saved! Preserving Old Philadelphia" Exhibits opens at the Philadelphia History Museum
- Grumblethorpe/GYV Holiday Open House





JANUARY 2017

- GYV fieldtrip to Eastern State Penitentiary for MLK Day Readings
- Elizabeth Willing Powel papers arrive at Powel House for research
- GYV fieldtrip to Colored Girls Museum
- Philadelphia Orchard Project pruning classes at Grumblethorpe



FEBRUARY 2017

- International Artist Jenny Holzer's *Truism* installed at Hill-Physick (partnership with The Barnes Foundation's "Person of the Crowd" project)
- Hear Again Radio Project performs the first of three "live" radio performances



MARCH 2017

- NBC filmed syndicated "Open House" video at Powel
- GYV Pancake fundraiser at Applebee's
- Spruce Street Supper Club at Powel





APRIL 2017

- Roof replacement at Hill-Physick winds down and the scaffolding is removed
- Grand Harmonie and Franklin Quartet perform pilot concert for PhilaLandmarks *Early Music Series*—Mozart in 1776
- Grumblethorpe takes part in Citywide Star Party (Phila Science Festival)
- Home Brewed Events *Vegan Tea Party* at Hill-Physick
- New lighting debuts at Historic Waynesborough
- Wedding themed photo shoot at Powel House
- Staff fieldtrip to the Museum of the American Revolution



MAY 2017

- Annual Hill-Physick Plant Sale and Pop-Up Shop
- 86th Annual Meeting at American Philosophical Society with Patrick Spero
- Garden Club of America Tea at Powel
- Annual Powel Garden Party
- *The Fortress* theater at Hill-Physick House



JUNE 2017

- Grumblethorpe Youth Volunteers Farmstand opens for the summer season
- Second Saturday at Grumblethorpe
- Special tour for National Travel Writers at Powel
- *A Taste of History* with Walter Staib films at Historic Waynesborough
- Forage and Feast series at Hill-Physick & Grumblethorpe
- Staff fieldtrip to Cliveden
- Suntrap Apothecary Workshops at Hill-Physick & Grumblethorpe
- *Voices of a Republic* opens at National Constitution Center (Powel partnership)





JULY 2017

- Independence Weekend Open House at Powel and Hill-Physick (Two Days: 600+ Visitors)



AUGUST 2017

- Birchtree Supper Club at Hill-Physick
- Home Brewed Events *Paris in Summertime Garden Party* at Hill-Physick
- *Preservation: Objects Registering the Past and Future* a joint exhibition with the Clay Studio opens at Hill-Physick
- Staff fieldtrip to Betsy Ross House



SEPTEMBER 2017

- Annual Third Street block party at Powel
- Home Brewed Events *A Renaissance Affaire* at Hill-Physick
- The PHM "Saved!" exhibit is reinstalled at Powel House



Events Highlights / Year Round



Once Upon a Nation Story Telling Bench at Powel
(Memorial-Labor Day Weekend)
Visitors: approximately 5,000



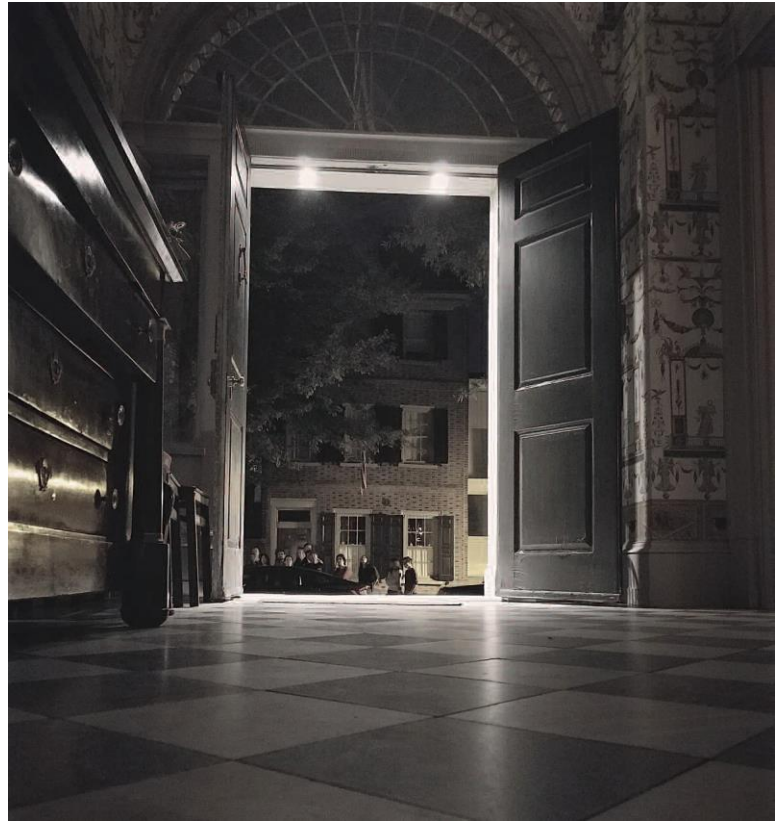
Private Event Rentals: 29
Wedding Rentals: 81



Grumblethorpe Elementary Education Program
Number of classes held: 185 (on- and off-site)
Number of students served: 1,488



Road Scholar at PhilaLandmarks
Number of programs: 61
Number of attendees: 1,140



Ghosts of the Mansion Tour (with Ghost Tours of Philadelphia)
Attendees: 762
General House Tour Visitors: 2,500

Digital Outreach and Engagement

Website: over 40,000 unique visitors
 Beyond US, we also received visitors from Canada, UK, Australia, and India
 Facebook, Instagram, and Twitter are the top social media drivers for website visits
 Our homepage is the most visited page, followed by visits to individual houses, events, and blog posts, with the average visit time at just over 3 minutes per view.

Blog Views: 4490 (from 23 posts)
 New Blog posts published: 10

Newsletter Subscribers: 1697 (emailed bimonthly)

Instagram: 1444 followers

Twitter: 981 followers, with 383,900 impressions

Facebook: 2139 followers, 2128 post "likes"
 Followers on individual house pages (managed by site managers):
 Powel House 615 Hill-Physick 248 Grumblethorpe 765 Historic Waynesborough 454

Overall average 30% increase in engagement across all social media platforms.



Hidden City Philadelphia Instagram Takeover: It's nice to have friends with 44K followers!



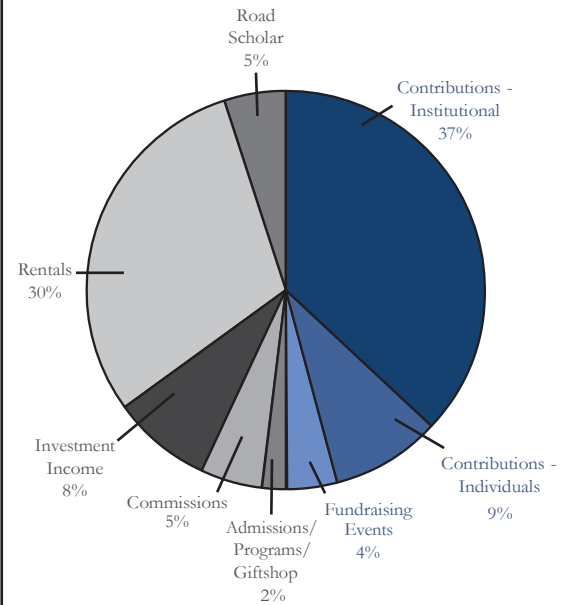
STATEMENT OF ACTIVITIES AND CHANGES IN NET ASSETS

YEAR ENDED SEPTEMBER 30, 2017

	Without Donor Restrictions	With Donor Restrictions	Total
Revenue And Support			
Admissions	15,326		15,326
Commissions	45,883		45,883
Contributions and Grants (gen. oper.)	89,647		89,647
Events Income (net of direct costs)	42,680	240	42,920
Grants and Contributions (restr.)	2,150	407,064	409,214
Interest and Dividend	23,601	7,478	31,079
Memberships	8,710		8,710
Museum shop	417		417
Program Activities	6,878		6,878
Rental Income	291,633		291,633
Road Scholar	1,114,738		1,114,738
Unrealized Gain on Investments	4,540	38,389	42,929
Realized Gain on Investments			
Net Assets Released from Restrictions:			
Satisfaction of Restrictions	298,957	(298,957)	
Total Revenue and Support	1,945,160	154,214	2,099,374
Expenses			
Program Services			
Road Scholar	1,068,046		1,068,046
Other programs	323,474		323,474
Total Program Services	1,391,520		1,391,520
Support Services			
Administrative and General	251,013		251,013
Total Expenses	1,642,533		1,642,533
Changes in Net Assets	302,627	154,214	456,841
Net Assets, beginning of year	1,902,297	739,391	2,641,688
Net Assets, end of year	\$2,204,924	\$893,605	\$3,098,529

2017 Net Revenue Sources

contributed sources (blue)
earned (black)



PhilaLandmarks Donors October 1, 2016 to September 30, 2017

Total Support – FY2017

The names listed here reflect total gifts, grants, contributions, memberships, restricted gifts, and fundraising events during our Fiscal Year 2017: October 1, 2016 – September 30, 2017.

General Operating Grants

Barra Foundation \$25,500

Pennsylvania Historical Museum Commission
\$16,834

Education Programs Grants

Connelly Foundation \$25,000

Widener Memorial Foundation \$10,010

Patricia Kind Family Foundation \$5,000

Rosenlund Family Fund \$3,000

Henrietta Tower Wurts Memorial \$2,000

Project and Program Grants

William B. Dietrich Foundation

\$215,000 to Hill-Physick Roof Project

Philadelphia Foundation – Fund for Children

\$30,000 to Grumblethorpe Youth Volunteers

Philadelphia Cultural Fund

\$5,140 to Grumblethorpe Farm Stand

Historic Germantown – SOS Grant

\$4,000 to Grumblethorpe

Gifts to Restricted Accounts

Bequests:

Jane Eiman to Powel House \$10,000

Dorrance Hamilton to Powel House \$100,000
(over 4 years)

Powel Endowment Fund

Lee and Geoffrey Dennis

Powel Committee Fund

Marica Angelides

Amanda Aslansan

Sherrin Baky-Nessler

Mimi Hanks-Bell

Robert P. Breading

Alexander Conner

Lee Dennis

Katherine S. Dunn

Judith Hartl

Charles A. Hilpl

Roberta Kangilaski

George Kelley

Nancy J. Lanham

Margaret Lonsetta

Christine Mahoney

Sarah M. Maxwell

Ann Moyer

Judit Nagy-Eichelberger

Suzie Pattison

Rita Powell

Susan Schwartz

Jan Stephano

Barbara Turner

Linda Witt

Powel Garden Fund

Marica Angelides

Amanda Aslansan

Sherrin Baky-Nessler

Mimi Hanks-Bell

Robert P. Breading

Alexander Conner

Lee Dennis

Katherine S. Dunn

Judith Hartl

Charles A. Hilpl

Roberta Kangilaski

George Kelley

Nancy J. Lanham

Margaret Lonsetta

Christine Mahoney

Sarah M. Maxwell

Ann Moyer

Judit Nagy-Eichelberger

Suzie Pattison

Rita Powell

Susan Schwartz

Jan Stephano

Barbara Turner

Linda Witt

Powel House

Parker and Cooper Band

Kathleen Burns-Alderfer

Lee and Geoffrey Dennis

Katherine and Peter Dunn

Sarah Jackson

Sarah M. Maxwell

Howard Sedran and Martha Levine

Linda Witt and James Marsh

Powel 3rd Street Neighbor Fund

Margo Burnette

Joan H. Cole

Harvey Hurdle and Kevin Yoder

Carol L. Lissack

Alice Levy

Kathleen McAfee Lash

Judit Nagy-Eichelberger

Jack P. Roddy

Mr. and Mrs. Philip N. Russo

Richard Scafidì

Randy Jill Schwartz

Linda Witt

Grumblethorpe Committee Fund

Linda Berger

Jasmine Bowens

Jonathan T. Cresswell

Gary Crowell

Diane Dunning-Watkins

Dominique Echevarria



Peter Edman
Thomas Hemmerick
Paul Jablonski
Andy M. Jickling
Jennifer Schultz
Russell Shelton
Christopher Waxman

Grumblethorpe Garden Fund

Green Street Monthly Meeting

Grumblethorpe Horticulturist

The Thomas Rosato Foundation
Mrs. Malcolm L. Wister

Grumblethorpe Youth Volunteers

Tim and Pam Alles
Jonathan Burton
Lee and Geoffrey Dennis
Green Street Monthly Meeting
Thomas Hemmerick
Henry F. Reichner

Grumblethorpe

Historic Germantown – SOS Grant
Pennsylvania Society of Sons of the Revolution
Charles Philips
Rebecca Weber
Dennis M. Wint

Hill-Physick Committee Fund

Linda DeMarco
Doris Gunther
Nancy Heinzen
Katharine Levensgood
Martha Levine
Barbara McLenahan
Christine Rother
Linda Seyda
Ruth L. Sine
Becky Sitarchuk
Donna Thomas
Audrey Walters
Ellen Ward

Jacqueline Weitzner
Ellen Wurster

Hill-Physick House

Samuel Freeman & Co.
Charles P. Keates, Esq.
Christine Rother
Howard Sedran and Martha Levine
John Simkiss
The State Society of the Cincinnati of
Pennsylvania

Historic Waynesborough Education Fund

Helen Giberson

Government

Pennsylvania Historical & Museum
Commission
Philadelphia Cultural Fund

Foundations

The Barra Foundation
Connelly Foundation
William B. Dietrich Foundation
Hamilton Family Foundation
Patricia Kind Family Foundation
Philadelphia Foundation – Fund for Children
The Thomas Rosato Foundation
Rosenlund Family Fund
Widener Memorial Foundation
Henrietta Tower Wurts Memorial

Corporations/Organizations

The Bartlett Tree Expert Company
Camco Management Company
City Tavern
Cliveden of the National Trust
Conestoga Questers #63
Day By Day Catering
DiBruno Brothers Catering
Drexel University
Samuel Freeman & Co.
Friends of Three Bears Park
Ghost Tour of Philadelphia

Green Street Monthly Meeting
Herb Scott Catering
Historic Germantown
HOK Group, Inc.
Jeffrey Miller Catering
John Milner Architects
John Neill Painting & Decorating, LLC.
Museum of the American Revolution
Newcomers Club of the Upper Main Line
PNC Bank
Papertini
Pennsylvania Society of Sons of the Revolution
Quaker City Mercantile, Inc.
Society Hill Civic Assoc.
Sophy Curson, Inc.
Spruce Street Supper Club
The State Society of the Cincinnati of
Pennsylvania
We Bee Brothers

\$10,000+

Lee and Geoffrey Dennis
Estate of Jane Eiman
Estate of Mrs. Samuel M.V. Hamilton
The Thomas Rosato Foundation

\$5,000+

Tim and Pam Alles
Charles P. Keates, Esq.
Pennsylvania Society of Sons of the Revolution
Mrs. Malcolm L. Wister

\$1,000+

Erica Alles
Dr. Richard Henry Bell
Marion Janet Hanks-Bell
Kathleen Burns-Alderfer
Lori Cohen
Gregory Cranford, AIA
Drexel University
Thomas J. Duffy
Mr. and Mrs. Peter A. Dunn
Day By Day Catering
Samuel Freeman & Co.

HOK Group, Inc.
James Kilvington
Stephen S. Lee
Sarah M. Maxwell
Thomas B. McCabe IV
Caroline Mills
Gregory P. Montanaro
Quaker City Mercantile, Inc.
Henry F. Reichner
Christine Rother
Howard Sedran and Martha Levine
John Simkiss
The State Society of the Cincinnati of
Pennsylvania
Society Hill Civic Asso.
Wayne and Donna Thomas
Jacqueline and Larry Weitzner
Dennis M. Wint
Linda Witt and James P. Marsh

\$500+

Marica Angelides
William and Sherrin Baky-Nessler
Carl Balis
The Bartlett Tree Expert Company
Robert Bryan, AIA and Julie Jensen Bryan
Cliveden of the National Trust
Alexander Conner
Linda DeMarco
Mr. and Mrs. Joseph M. Evans, Jr.
Mr. and Mrs. Herbert Gunther
Mr. and Mrs. Bernard G. Heinzen
Patricia and Charles A. Hilpl
John Milner Architects
KPMG Community Giving
George L. Kelley
P.K. and Katharine Levensgood
Mr. and Mrs. Michael J. Mahoney
Museum of the American Revolution
Reid and Liz Murray
Judit Nagy-Eichelberger
Mr. and Mrs. J. N. Pattison IV
Mona Plumer
Honorable and Mrs. Kenneth J. Powell, Jr.

Susan and William Schwartz
Sophy Curson, Inc.
Spruce Street Supper Club
Mr. and Mrs. Constantine Stephano
Mr. and Mrs. James B. Straw
Michael and Pam Rosser Thistle
Jonathan and Barbara Turner

\$250+

Roger and Dana Band
Margaret Biddle
Robert Boris and Linda Seyda
Robert P. Breading, AIA
Jonathan Burton
Anne H. Cook
Jeff D'Aquila
Anthony Dean and Kathleen Beaver
Robert and Kitty DeMento
Laura A. Lane and David R. DeVoe
Mr. and Mrs. Albert DiSanto
Peggy and George Drach
James P. Dunn and Hannah Kim
Bishop David G. Evans
J.D. and Michael Faucher
Edward George
Rosemary Gifford
Mr. and Mrs. Steven A. Grasse
James A. Hamilton, III and
Laura M. Rizio, Esq.
Linda Jeter Harris
Palmer and Judy Hartl
Karen Hoerner
Roberta and Jaan Kangilaski
Michelle and H. Paxson Keates
Nancy J. Lanham
Margaret H. Lonzetta
Mr. and Mrs. David W. Maxey
Mr. and Mrs. Christopher P. McGill
Dr. Ann E. Moyer
Jane Napoli
John Neill Painting & Decorating, LLC.
Barbara A. Oldenhoff
Francesca Palladinetti
Theodore R. Robb

Ginger Sacha and Stephen Schatz
Ruth L. Sine
Becky and Eric Sitarchuk
Audrey Walters
Mr. and Mrs. James T. Ward
Kevin A. Yoder and Harvey Hurdle

\$100+

Anonymous
Michael Alam
Kristina Antoniadis, MD
Mr. and Mrs. Murat Aslansan
Margaret Barringer
Mrs. Joseph Beardwood III
Kelly Ann Beene
Klaus and Karin Besier
Deborah Dilworth Bishop
Judith Breslin
Mr. and Mrs. William C. Buck
Loretta Burton
Camco Management Company
Noreen and Charles Cheleden
Mr. and Mrs. Jonathan T. Cresswell
Mary Ann Cresswell
Ann Delaura
Bart Delfiner
Michael and Barbara Delorey
Ineke M. Dikland
Susan Dudkin
George and Gail Ehrlich
Mr. and Mrs. Barry N. Eiswerth
Sarah Fife
Friends of Three Bears Park
Laurence Gavin
Virginia Funk and John T. Goodman
Barbara Darhun Grabias
Terry A. Graboyes
Green Street Monthly Meeting
Mr. and Mrs. George J. Haitsch
The Hamilton Family Foundation
Sharon L. Haynie
Thomas Hemmerick
Ruth Herd
Sarah Jackson

Sheila Jamison-Schwartz
Mark and Judy Jaworski
Newcomers Club of the Upper Main Line
William J.D. Jordan
Maggie Jordan
Dennis P. Kane
Daniel Kelley and Mary Keefe
Dimitrios and Charlotte Kritikos
Joe and Kim Larkin
Gabriele Windeck Lee
James and Beth Logue
Margaret Lord
Norman Marcus
Mary Ann Martin
David McCaslin
Harry McCullough
Barbara McLenahan
Duncan McNiff
Marlene McPherson
Dr. John L. Melvin
Dr. Carol Melvin-Pate
Stephen W. Miller
Madeline E. Miller
H. Gordon Leggett, Jr.
Linda Mintzer
Lindsey and David Morgan
Elaine S. Morris
Elizabeth Mosimann
Ignatius F. Mullen, Jr.
Christina Murphy
PNC Bank
Papertini
Aleni Pappas and Anthony Kyriakakis
Kristine Paulat
Steven Peitzman
Charlotte D. Phelps
Charles Philips
Valeria Potigailo
Ann Ellis Powel
Anne Pramila
Thomas F. Quigley, Jr.
Michael and Carolyn Quinn
Pam and Gresham Riley
Lynne and Franklin Roberts

Dr. and Mrs. Donald J. Rosato
Diane F. Rossheim
Mr. and Mrs. Philip N. Russo
Timothy B. Safford
Lynn A. Karoly
Carolyn W. Sampson
Paul and Barbara Schraeder
Jennifer Schultz
Roseann Sellani
Luca and Dawn Sena
Bela Shehu
Sam and Kate Sidewater
Mr. and Mrs. John Sigmund
Mr. and Mrs. William Skwersky
Richard Wood Snowden
Paul and Phyllis St. Onge
Susan and Charles Summerfield
Mary and James Thorne
Kimberly J. Togman
Jack and Ruth Treatman
Dr. and Mrs. John C. Van Horne
John Ventura
Michael and Milla Waldman
Carolyn Walter and Bruce Bryen
Fon Wang
Lenore Wasserman Scola and
Dr. Anthony Scola
Barbara Watson and Bob Curley
Melinda Watts
David Weiss
Martin and Judi Welch
Douglas and Ann Wilkerson
Kim Williams and Rosanne Willams
Barbara Wilson
Mr. and Mrs. John Brame Witmer
Ellen and John Wurster

\$99 and under
Lynne M. Abraham
Rev. Michael Alan
Mrs. Richard Alexander
Kayla and Chris Anthony
Mr. and Mrs. Harry Appel
Elizabeth A. Armour and Philip E. Rakita

Marilyn Ashbrook
Ines Assmann
Lisa Bache
Julia Bache
Parker and Cooper Band
Colette Barlow
Mrs. Murray J. Belman
Linda Berger
Rosanne Bonaventura
Mr. and Mrs. Irvin Borowsky
Judy Boyle
Dr. Fraser H. Brown
Stacie Brown
Tish Bryne
Jo Ann Buller
K. Burke
Robert H. Bury
M.K. Carmichael
Kyle Cassidy
Al Cavallari
City Tavern
James E. Colberg, MD and
Kathleen Stephenson, Esq.
Conestoga Questers #63
Mr. and Mrs. Peter Conn
Megan Joy Cuadrado
Karen Daly
Matthew J. DeJulio, Jr.
Mr. and Mrs. Jan P. Dembinski
Ann W. Dennen
George and Jean Dowdall
Edward R. Duenskie
Diane Dunning-Watkins
Dominique Echevarria
Joel Eckel and We Bee Brothers
Peter Edman
Mr. & Mrs. Steven Eizen
Preston and Carol Feden
Amy Finkel
Kathleen A. Foster
Mary Q. Frantz
Nancy Frenze
Paul Fugazzotto
Jorja Fullerton

Anthony Gargano
Sara Garonzik
Barbara C. Gelman and Jay Borowski
Helen Giberson
Gillian Gilhool
Elizabeth Gilpin
Frank Giordano
Carla Grasser
Marcy Hasbrouck
Gail and Henry Hauptfuhrer
Linda D. Hawley
Dolores Helb
Mickey and Chip Herr
Constance Hershey
Sandra Hewlett
William Higgins
Dr. and Mrs. Robert A. Hirsh
Matthew Hunsberger
Ruth Isaac
Paul Jablonski
Constance Jacobs
Justin Jeffers
Ejner and Pozi Jensen
Andy M. Jickling
Jeanette Jimenez
Yoni Kahn
Frona Kahn
Brearley B. Karsch
Leroy Kean
Sarah Kern
Richard Ketterer
Victoria Kirkham
Mr. and Mrs. Allen S. Kirschner
Mr. and Mrs. Norman Kline
Robert Kramer and Harriet Brumberg
Karen Lancaster
Charles and Lucinda Landreth
Joan Lapayowker
Malcolm L. Lazin
Sherry Lefevre
Charles and Maureen Letocha
Alice Levy and Mordechai Seal
Janet Lewis
Walter B. Lotspeich

Dayton Lummis
Fiona Macleod
Marco Malandra
Joseph Malikowski
C. Roderick Maroney
Kathleen McAfee Lash
Kathleen D. McCoy
Kathleen McGrann
Jessica Meehan
Jeffrey Miller Catering
Alex Moede and Michael Donahue
Margarita Montanaro
Scott Moore
Albert Murphy
Theodore N. Nickles
Mr. and Mrs. Louis K. O'Leary
Anna Oppenheim
Paula Ostroff
Sandra Otte
Jessica Packard
Richard Pagano
Dawn Patrick
Rachael Peachey
Mr. and Mrs. Reiner Pelzer
Debra Phillips
Robert and Guiliana Razzino - Pierson
Nathaniel Popkin
Sarah Powel
Mr. and Mrs. Thomas I.H. Powel, Jr.
Mary Purcell
Sally Redlener
Robert and Jeanette Richardson
Stefano Rivella
Linda Robertson
Jack P. Roddy
Cheryl and David Rosen
Jeremy Rosenblum
Dave Rucki
Amelia Ruggieri
Marvin and Ruth Sachs
Mary Sales
Danielle Saudsmark
Richard Scaffidi
Matthew Scanlan II

Elizabeth Scanlon
Julia Schlozman
Randy Jill Schwartz
Linda Skale
Catherine Smith
Rheta Smith
David Soltesz
Evelyn Spritz
Elizabeth Squires
Karen K. Steenhoff
Paul R. Steinke
Laurie Switzer and Robert Randolph
Karen Sztencel
Judith Tannenbaum
Allison Taub
Mr. and Mrs. Leonard J. Thompson
Mr. and Mrs. Duane E. Thurman
John Totaro
Mary C. Tracy
David S Traub, AIA
Barrie Trimmingham and David Pierson
Steven Ujifusa
Norma Van Dyke
Luciano and Marjorie Virgili
Patrick and Margaret Walsh
Miffy Walton
R. Charles Waring
Scott Watson
Christopher Waxman
Rebecca Weber
Jessica Weinstein
Laura Sanguineti White
Mr. and Mrs. Thomas P. Williams
Therese M. Willis
Eleanor K. Wilson
Dexter Wilson
Wallace Wing and Sherry Shamansky
Arleen Wolf

MEMBERSHIP:

Tim and Pam Alles
Erica Alles
Marica Angelides
Kayla and Chris Anthony
Kristina Antoniadis, MD
Julia Bache
Lisa Bache
William and Sherrin Baky-Nessler
Carl Balis
Colette Barlow
Margaret Barringer
Mrs. Joseph Beardwood III
Dr. Richard Henry Bell
Marion Janet Hanks-Bell
Laura Belman
Margaret Biddle
Rosanne Bonaventura
Robert Boris and Linda Seyda
Dr. George Boudreau
Robert P. Breading, AIA
Judith Breslin
Jessica Brino
Dr. Fraser H. Brown
Ann and David Brownlee
Robert Bryan, AIA and Julie Jensen Bryan
Nicole Diane Buck and Zachary James Chalfant
William and Laura Buck
Jo Ann Buller
Margo Burnette
Jonathan Burton
Loretta Burton
Robert H. Bury
Michael Campo
Alan B. Conner
M.K. Carmichael
Al Cavalari
Andrea Cayley
Amber Christoph and Joseph Silvestri
Mary Kate Cochran and Nicholas Lucarelli
Jeffrey Cohen and Linda May
Rosina Coltellaro
Alexander Conner

Lori Cohen
Anne H. Cook
Gregory Cranford, AIA
Jonathan and Melissa Cresswell
Mary Ann Cresswell
Gary Crowell
Megan Joy Cuadrado
Jennifer and Alvin Davidson
Sean Delaney
Linda DeMarco
Ann W. Dennen
Lee and Geoffrey Dennis



Adrienna DeRobertis and Michael Efsthathios
Marci DeVincenzo and Julian Gibellino
Tobey and Mark Dichter
Kristen Dilemno and James Berrill
Ashley Dodd and Jon Bamonte
Peggy and George Drach
Susan Dudkin
Edward Duenskie
Thomas J. Duffy
Peter and Katherine Dunn
Diane Dunning-Watkins
Shannon Eblen

Dominique Echevarria
Peter Edman
Bishop David G. Evans
Kathleen A. Foster
Mary Q. Frantz
Antonette Frasch and David DeTora
Paul Fugazzotto
Jorja Fullerton
David Gauthier and Lorelei Narvaja
Edward George
Elizabeth Gilpin
Frank Giordano
Paul and Lynn Gluck
Christy Gonzalez and Glenn Bugden
Tara Gordon and Anthony Manfred
Arina Goyle and Franklin Walter
Barbara Darhun Grabias
Susan Graham
Carla Grasser
Herbert and Doris Gunther
William F. Hahn
George and Susan Haitsch
Mrs. Samuel M. V. Hamilton +
The Hamilton Family Foundation
Linda Jeter Harris
Palmer and Judy Hartl
Gail and Henry Hauptfuhrer
Linda D. Hawley
Mrs. Johnston Hayward
Bernard and Nancy Heinzen
Thomas Hemmerick
Ruth Herd
Mickey and Chip Herr
Constance Hershey
Megan Hickey and Ryan D'Ambrosio
Patricia and Charles A. Hilpl
William L. Hires
Paul Jablonski
Jeffrey Miller Catering
Andy M. Jickling
Jeanette Jimenez
William J.D. Jordan
Dennis P. Kane
Roberta and Jaan Kangilaski

Essie Karp
Nicole Katze and Chris Baxter
Leroy Kean
Charles P. Keates, Esq.
Michelle and H. Paxson Keates
Daniel Kelley and Mary Keefe
George L. Kelley
James Kilvington
Daniel Lamade
Jonathan Lane and Justin Huggins
Cathy Layland
Stephen S. Lee
P.K. and Katharine Levengood
Martha Levine and Howard Sedran
Tara Levy
Maxine and Howard Lewis
Margaret H. Lonzetta
Dayton Lummis
Shelby Maddonni and Sean Macilvain
Christine and Michael Mahoney
Dorothy Malloy
Norman Marcus
Sarah M. Maxwell
Thomas B. McCabe IV
Molly McCoy and Michael Kalfin
Christopher and Claudia McGill
Deidre McEntee and Peter Greenhaigh
Denise McGlade and James Tripiciano
Barbara McLenahan
Mrs. Robert McNeil, Jr.
Dr. Arthur Michaelis
Caroline Mills
Gregory P. Montanaro
Scott Moore
Elaine S. Morris
Elizabeth Mosimann
Reid and Liz Murray
Judit Nagy-Eichelberger
Albert Olenzak
Aaron Orzech
Lillie Otte
Kathryn Pannepacke and Diane Dunning
Nancy Pasquier
Dawn Patrick

J. N. and Suzie Pattison
Steven Peitzman
Mr. and Mrs. T. Sergeant Pepper
Nathaniel Popkin
Harford Worthington Powel
Thomas I.H. Powel, Jr. and Elizabeth Streitz
Kenneth and Rita Powell
Carol Purfield
Michael and Carolyn Quinn
Erin Read
Sally Redlener
Henry F. Reichner
Heather Reynolds and Jesse Leonardo
Theodore R. Robb
Linda Robertson
Rev. Terrance Andrew Robinson, MD
Dr. Donald and Judith Rosato
Cyndi Janzen Rose
Christine Rother
Dr. and Mrs. Karl L. Rugart , Jr.
Ginger Sacha and Stephen Schatz
Marvin and Ruth Sachs
Sam and Kate Sidewater
Carolyn W. Sampson
Matthew Scanlan II
Julia Schlozman
Hilary Scholz and Roman Rozek
Jennifer Schultz, Esq.
Loree Schuster
Susan and William Schwartz
Ruth L. Sine
Linda Skale
Catherine Smith
Rheta Smith
Richard Wood Snowden
David Soltetz
Karen K. Steenhoff
Shira Stein and Sean Kelly
Paul R. Steinke
Jan Stephano
Ben Stout and Suzanne Seesman
Mrs. George Strawbridge
Jennifer Summerfield
Dominika Test and Anthony O'Brien

Michael and Pam Rosser Thistle
Wayne and Donna Thomas
Leonard and Diana Thompson
Mary and James Thorne
Duane and Judith Thurman
Andrew Trackman
Ada Trillo
Barrie Trimmingham and David Pierson
Jonathan and Barbara Turner
George and Carol Vinci
Connie Walsh
Audrey Walters
James and Ellen Ward
Christopher Waxman
Jacqueline and Larry Weitzner
Nicole Wells and Peter Lyons
Laura Sanguineti White
Barbara Wilson
Eleanor K. Wilson
Linda Witt and James P. Marsh
Ellen and John Wurster
Amy Yang
Kate Yohe and Mike Nolfi
Sherley Young
Jordan Zavatsky and Michael Sullivan



Board of Trustees

Charles P. Keates, Esq.
Chairman

Gregory P. Montanaro
First Vice Chairman

Jonathan Cresswell
Second Vice Chairman

Timothy M. Alles
Treasurer

Henry F. Reichner
Secretary

Erica Alles
Dr. Fraser H. Brown
Gregory Cranford, AIA
Lori Cohen
Lee K. Dennis
Bishop David G. Evans
Frank Giordano
Thomas Hemmerick
James Kilvington
Stephen S. Lee
Martha Levine
Thomas B. McCabe IV
Caroline Mills
Lori Dillard Rech *
Jennifer Schultz, Esq.
Karen Steenhoff
Donna Thomas

Advisory Council

Jack Asher +
David B. Brownlee
Gary J. Crowell, AIA
George J. Haitsch
Constance Hershey
Eleanor Morris Illoway
Mary Keefe
Daniel Kelley
Brandi Levine
Joseph Lundy, Esq.
T. Sergeant Pepper, Esq.
Grace M. Renner
Keith Straw
Franklin D. Vagnone
John Van Horne
Christopher J. Waxman

Standing Committees

For year ending September 30, 2017

Thanks to our dedicated volunteer committees for the roles they play in carrying out our mission.



Executive Committee

Chairman – Charles P. Keates, Esq.
1st Vice Chairman – Gregory P. Montanaro
2nd Vice Chairman – Jonathan Cresswell
Treasurer – Timothy M. Alles
Secretary – Henry F. Reichner
Collections Chair – Jonathan Cresswell
Nominating Chair – Gregory P. Montanaro
Executive Director – Jonathan Burton

Collections Committee

Chair – Jonathan Cresswell
Lynne Anderson
Alexander Conner
Anne Cook
Ann Dennen
Connie Hershey
Ann E. Moyer
Sandra Ormerod
Donna Thomas
Ellen Ward
Julianne R. Whitehead

Finance/Audit Committee

Chair – Timothy M. Alles
Thomas Hemmerick
Bill Higgins
Charles P. Keates, Esq.
Ex officio: Jonathan Burton, Jorja Fullerton

Development Committee

Charles P. Keates, Esq.
Gregory P. Montanaro
John Ventura
Ex officio: Jonathan Burton

Governance/Nominating Committee

Chair – Gregory P. Montanaro
Lori Cohen
Charles P. Keates, Esq.

Property/Building Committee

Robert P. Breeding
Gary J. Crowell
Thomas Hemmerick
Martha Levine
Kathy Schwartz
Ruth Sine
Donna Thomas
ex officio: Jonathan Burton



Powell House Sponsors

Deborah Bishop
Kathy Burns-Alderfer
Chris Mahoney
Lalla de Rham
Grace Renner

Powell House Site Managers

Jennifer and Alvin Davidson



Hill-Physick House Committee

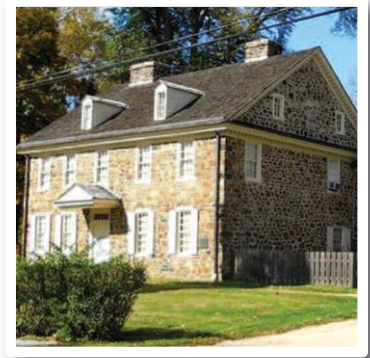
House Chair – Martha Levine
Linda DeMarco
Doris Gunther
Nancy Heinzen
Katharine Levengood
Barbara McLenahan
Christine Rother
Linda Seyda
Edna Shaw
Ruth Sine
Becky Sitarchuk
Allison Taub
Pamela Rosser Thistle
Donna Thomas
Audrey Walters
Ellen Ward
Jackie Weitzner
Ellen Wurster

Hill-Physick House Sponsor

Kathleen Stephenson, Esq.

Hill-Physick House Site Manager

Suzanne Seesman and
Benjamin Stout *

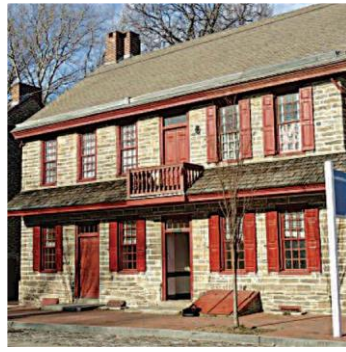


Historic Waynesborough House Committee

House Chair – Karen Steenhoff
Lynne Anderson
Ann Dennen
Mary Furtaw
Polly Garnett
Elizabeth Gilpin
Frances Gleason
Linda D. Hawley *
Lois Hazard
J. Bennett Hill, Jr. +
Shirley Hill
May Holgren
Wayne Lewis
Lynne Manus
Cynthia McGroarty
Pat McOsker
Sandy Ormerod
Janet Pennell
Grace Renner
Kathy Schwartz
Cheryl Snyder
Sally Spargo
Eric Williams
Ellie Wilson

Historic Waynesborough House Site Managers

Lynn and Paul Gluck



Grumblethorpe House Committee

House Chair –
Jennifer Schultz, Esq.
Linda Berger
Jasmine Bowens
Jonathan Cresswell
Gary J. Crowell
Dominique Echezarria
Peter Edman
Tom Hemmerick
Paul Jablonski
Andy Jickling
Russell Shelton
Diane Dunning Watkins
Christopher J. Waxman

Grumblethorpe Site Managers

Diane Dunning and
Kathryn Pannepacker *
Grumblethorpe Horticulturalist,
Andy Jickling *

Powell House Committee

House Chair – Lee K. Dennis
Co-Vice Chair – Robert P. Breathing
Co-Vice Chair – Kathie Dunn
Marica Angelides
Amanda Aslansan
Sherrin Baky-Nessler
Alexander Conner
Anne Cook
Virginia Funk
Dodo Hamilton +
Mimi Hanks-Bell
Palmer Hartl
Bill Higgins
Patricia Kraft Hilpl
Roberta Kangilaski
George L. Kelley
Nancy Lanham
Margaret Lonsetta
Rod Maroney *
Sarah Maxwell
Ann Moyer
Judit Nagy-Eichelberger
Suzie Pattison
Rita M. Powell
Susan Schwartz
Jan Stephano
Bobbie Turner
Julianne Whitehead
Linda Witt

* *Term completed*

+ *Deceased*

In Memoriam: This year we said goodbye to two long-time supporters.

J. Bennett Hill, Jr. (pictured here with his fellow volunteer guides) had a long-time passion for Historic Waynesborough. He was inspired by visiting school groups, and sharing how material culture illuminates history.



Dorrance “Dodo” Hill Hamilton supported many philanthropic causes, and we were lucky that Powel House was a beneficiary of her largess. Pictured here with her family in 2011 at our annual Powel Garden Party. We will remember her hats and her love of the Powel garden.



Special Thanks to our interns:

Paul Daley (not pictured),
Ted Maust, Francesca
Sacchetti, Andrea Galdi
(with Jennifer Davidson.)



Additional Thanks to:

Reverend Michael Alan (illustration p 20)
Art in the Age
Jack and Deede Montgomery
David Maxey
Historic Philadelphia, Inc.

Hidden City Philadelphia
The Center for Public History, Temple University
Cindy Little and the Philadelphia History Museum
Patrick Spero and American Philosophical Society
National Constitution Center

Photo Credits:

Cover: Lei Chen @leisheehan
Back cover: Molly Picture Studios
Mickey Herr
Kayla Anthony
Chris Anthony
Michael Muehlbauer
Suzanne Seesman
Diana Thompson
Stephen Lyford
Birch Tree Supper Club
Sharon Tortello (Grand Harmonie)
Katherine Rapin (Spruce Street Supper Club)
Jaci Berkopec Photography (Wedding Photo)
Road Scholar International
Sabine Ostinvil
Sam Quinn Photography

Designed and Printed by
EnForm Graphic Productions, Inc.

Grumblethorpe Youth Volunteer Spotlight: Michaela Benjamin

The Grumblethorpe Youth Volunteers (GYVs) are a site-based, service youth group (ages 12-18) from schools throughout Philadelphia. During the school year, GYVs meet monthly. They utilize a group charter and a self-elected board. They help with events at Grumblethorpe and Historic Germantown, as well as raise funds by selling homemade pies, cookies, jams, and ice cream throughout the year. During the summer months some of the GYVs work with a resident farmer to grow produce and run a weekly farmstand as paid staff. Fieldtrips allow the GYVs to explore and learn history both locally and regionally.



Like many of her fellow GYVs, Michaela's first introduction to Grumblethorpe came through attending one of Grumblethorpe's Elementary Education programs (GEEP). She was six years old and attended DePaul Catholic School. When she was older she discovered the GYV program, and as she tells it her heart found a safe place and a much-needed refuge. Now on the verge of graduating from Multicultural Academy Charter School, she reflects on her time as a GYV. In the fall of 2018 Michaela will head off to college. She was accepted into 11 different college programs and received several scholarship packages. She chose Bloomsburg University for their American Sign Language program.

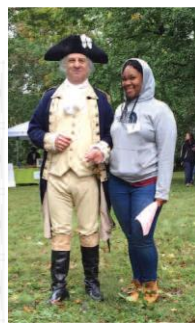
Finding her voice: Michaela credits education director, Diana Thompson, for teaching her to speak up, be strong, be kind, and to think of others.

Acceptance: Michaela wants you to know that the GYVs are a very tight, supportive group. Love is their mantra and they accept all genders, religions, nationalities, and abilities. Born in England to a Jamaican family, Michaela self-identifies as a black, female, immigrant. In 2017 Michaela spearheaded the creation of an Equality Day event, because she witnessed her LGBTQ high school friends being bullied and wanted to educate those around her on ways to be supportive. She even attended a PhilaLandmarks board meeting to solicit funds directly for the program.

Sense of place: The sense of refuge the GYVs experience at Grumblethorpe cannot be underestimated. Sitting under the centuries-old Gingko tree, Michaela finds strength, safety, and comfort a world away from the urban landscape she treks daily. She calls it magical. She has also learned to value history and the artifacts that help tell the stories of those who came before.

Self-sufficiency: Michaela found endless lessons in the Grumblethorpe gardens. She learned about the environment, growing food, the impact of nutrition, and sharing food with the less fortunate. Through her work at the GYV-led farmstand, she took pride in interacting with the neighborhood and providing low cost, fresh vegetables in an urban food desert. Through the farmstand, she learned management skills and how to address customer needs.

Biggest Achievement: Not only did Michaela become a farmstand manager, she earned the privilege of becoming a key holder to the property. She is quite proud to be trusted with a place she loves so deeply. She has literally and figuratively planted roots at Grumblethorpe, and she imagines a day when her own children will experience the magic of Grumblethorpe.



PhilaLandmarks Staff (2018)

Jonathan Burton, Executive Director, jburton@philalandmarks.org

Kayla Anthony, Membership & Programs Manager, kanthony@philalandmarks.org

Meagan Regina, Private Rentals Coordinator, mregina@philalandmarks.org

Margaret 'Pixie' Biddle, Road Scholar Director, mbiddle@philalandmarks.org

Jorja Fullerton, Administrator, jfullerton@philalandmarks.org

Mickey Herr, Special Projects, mherr@philalandmarks.org

Diana Thompson, Grumblethorpe Education Director, education@philalandmarks.org

Michael Muehlbauer, Grumblethorpe Operations Manager, grumblethorpe@philalandmarks.org

Meagan Regina & Matt Iannone, Powel House Site Managers, PowelHouse@philalandmarks.org

Chris & Kayla Anthony, Hill-Physick Site Managers, PhysickHouse@philalandmarks.org

Lynn and Paul Gluck, Historic Waynesborough Site Managers, historicwaynesborough@philalandmarks.org

Powel House, 244 South Third Street, Philadelphia 19106

Grumblethorpe, 5267 Germantown Avenue, Philadelphia 19144

Hill-Physick House, 321 South Fourth Street, Philadelphia 19106

Historic Waynesborough, 2049 Waynesborough Road, Paoli 19301

Administrative Office:

321 South Fourth Street, Philadelphia, PA 19106

215-925-2251

www.philalandmarks.org

Find us @PhilaLandmarks

